



Be-Tech
Premium Fingerprint Digital Door Lock

- Digital Cylindrical Latch Lock
- Fingerprint & Touchpad & Mobile Key
- 60mm/70mm Backset Cylindrical Latch
- Stainless Steel



Easy Access
Leading Keyless Solutions Since 1992



Various access

Be-Tech R780FTL has Four access solutions, Bluetooth key, Fingerprint, PIN code and Mechanical key for your convenience.



Mobile APP

Allow users to configure and unlock the lock via mobile phone.



One-touch fingerprint verification

One-touch Fingerprint verification technology has been applied to conveniently read a fingerprint in one shot.



Operation status notification

Whenever any operation is made, the LED indicator informs you what is happening through different colors and signs.



Automatic locking

Door lock will be locked automatically after opening door a few seconds. (Manual operation is also available).



Missing key invalidation

Once you lose your key, it has no validation as long as you re-register rest of your keys. For convenience and in case of emergency.



Anti-panic exit system

For convenience and in case of emergency, it allows you to open the door by simply turning its handle from inside.



Alarm (Incorrect Fingerprint, RF Card or PIN code)

Alarm will be on and last for 60 seconds if anyone attempts to open the lock with incorrect Fingerprint, PIN code for 5 times.



Low battery warning signal

A continuous "beep" sound during door access will alert you to replace batteries.



Invisible keypad

Keypad number can be seen only when you touch the screen with your palm.



Mechanical key override

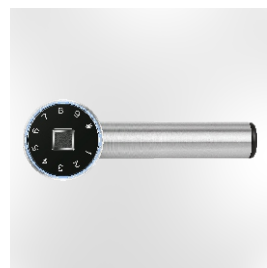
For emergency, it can also be unlocked with a mechanical key.



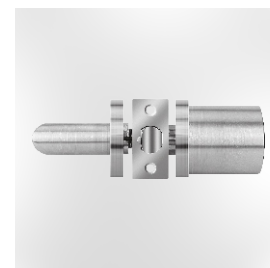
Convenient



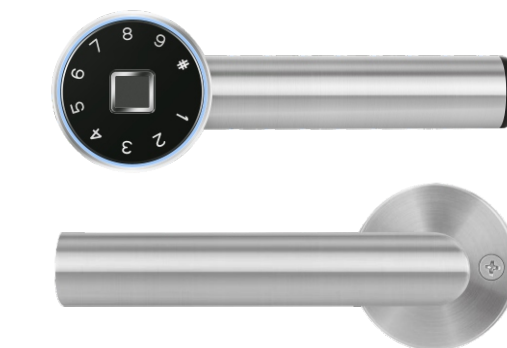
Model



Simple



Safe



Specification

Parts	Specifications	Remarks
Front(Front Body)	162(W)×60(H)×70(D)(with handle)mm	Temperature: Workable -25°C~70°C Humidity: Workable 20%~93%±2RH
Back(Back Body)	150.5(W)×60(H)×70(D)(with handle)mm	
Door Thickness	Applicable Range 40-120mm	
Material	Stainless Steel	
Bluetooth	1 Master BLE key (Able to share sub Master BLE key)	
Fingerprint	Up to 10 Fingerprints(1 master Fingerprint & 9 user Fingerprints)	
User Codes	Up to 10 Groups(000000~0000000000)(1 master group & 9 user groups)	
Battery	3X1.5V AAA alkaline batteries(Operating voltage:3.3~4.5V)	Last up to 6 mouths(20 times used a day)

Contact us:



Guangdong Be-Tech Security Systems Limited

No.17, Ronggui Technology Industrial Park

Keyuan 3rd Road, Shunde, Foshan

Guangdong, P.R.China

Tel: +86 757 28376123 | Fax: +86 757 28308823

E-mail: export@be-tech.com.cn | www.betechlock.com

Specifications may change without notice.

ID:04-BTFMTA42C2108-EI-01